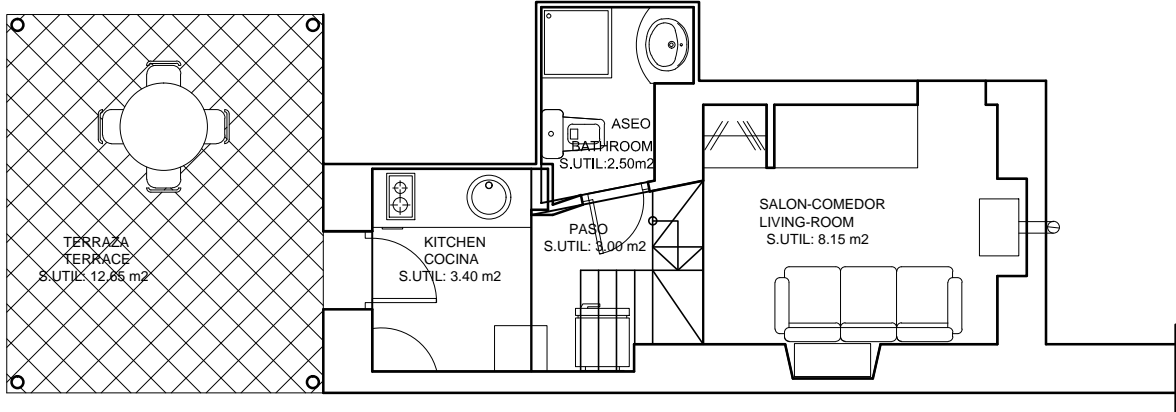
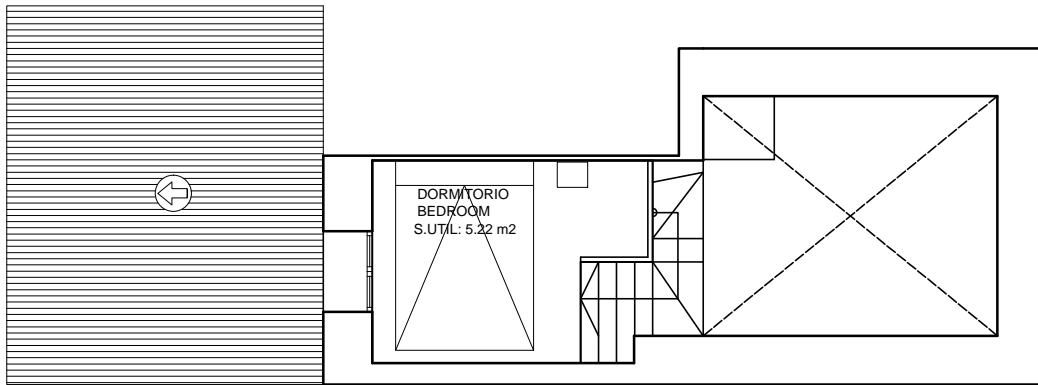


"ESTUDIO MADROÑO"



PLANTA BAJA
GROUND FLOOR



PLANTA ALTA
UPSTAIRS

SUPERFICIE CONST.TOTAL= 35.77 m²

Construcción 4

SALON-COMEDOR, LIVING-ROOM	8.15 m ²
COCINA, KITCHEN	3.40 m ²
BAÑO, BATHROOM	2.50 m ²
DORMITORIO, BEDROOM	5.22 m ²
PASO	3.00 m ²