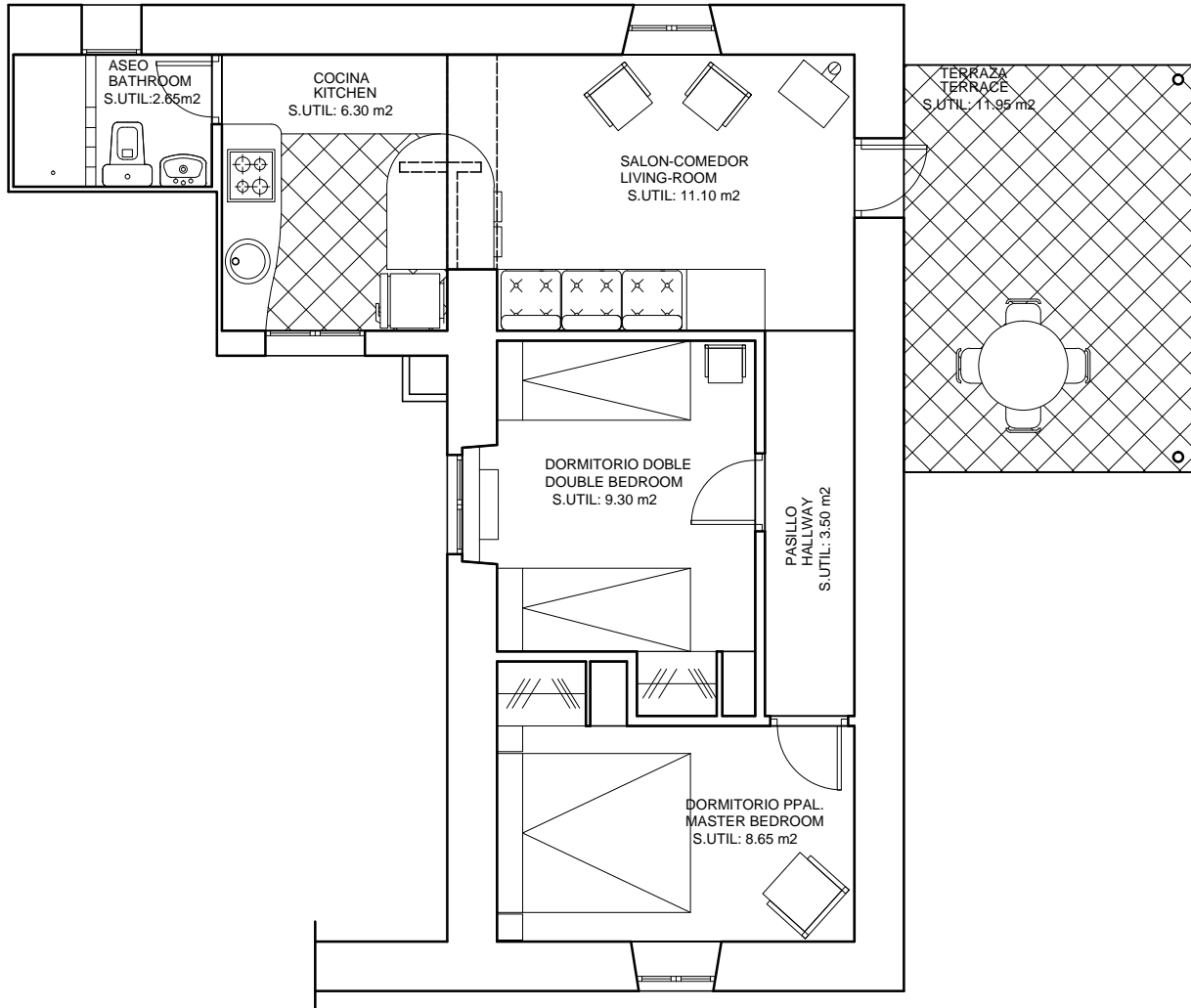


"CASA DEL MONTE"



SUPERFICIE CONST.TOTAL= 57.80 m²

Construcción 1

SALON-COMEDOR, LIVING-ROOM	11.10 m ²
COCINA, KITCHEN	6.30 m ²
BAÑO, BATHROOM	2.65 m ²
DORMITORIO PPAL, BEDROOM	8.65 m ²
TERRAZA, TERRACE	11.95 m ²
DORMITORIO DOBLE, BEDROOM	9.30 m ²
PASILLO, HALLWAY	3.50 m ²